

## THE LAST MECHANICAL MONSTER

VERSION 2.0, MAY 2015

by BRIAN FIES

### TOOLS AND MATERIALS:

Seven sheets white cardstock paper (at least 65#)

Cutting tool--ideally something like an Xacto knife, but sharp scissors will do

Ruler or straight edge

Glue

Toothpick to help spread glue

Brads, if you want the joints to move.

### DIRECTIONS:

Print the following seven pages onto white cardstock.

Carefully cut along the black lines.

Be sure to keep track of which part is which (especially right vs. left)!

To make sharp, precise folds, score along the gray lines (scoring means using a knife or other sharp tool to GENTLY crease the paper without cutting it).

Fold and try all the tabs, slots and other connections before gluing! ALSO, don't seal up a piece until you're sure you don't need to work on it from the inside (for example, to glue in a tab or attach a joint).

The back sides of the antennas and claws are visible in the completed model, so you may want to color them gray or black (e.g., with a felt marker).

Too much glue makes a mess. Use a little and spread it thinly.

### JOINTS:

Small brads could be used to make the neck, shoulders and hips swivel (however, I'd still recommend that the elbows and knees be glued; otherwise, the model gets too flimsy to stand). If so, punch holes for brads at the center of the crosshairs provided.

Glue the joints at whatever angle you want. A slight bend at the elbow or knee is more interesting than a rigidly straight arm or leg.

### FINALLY:

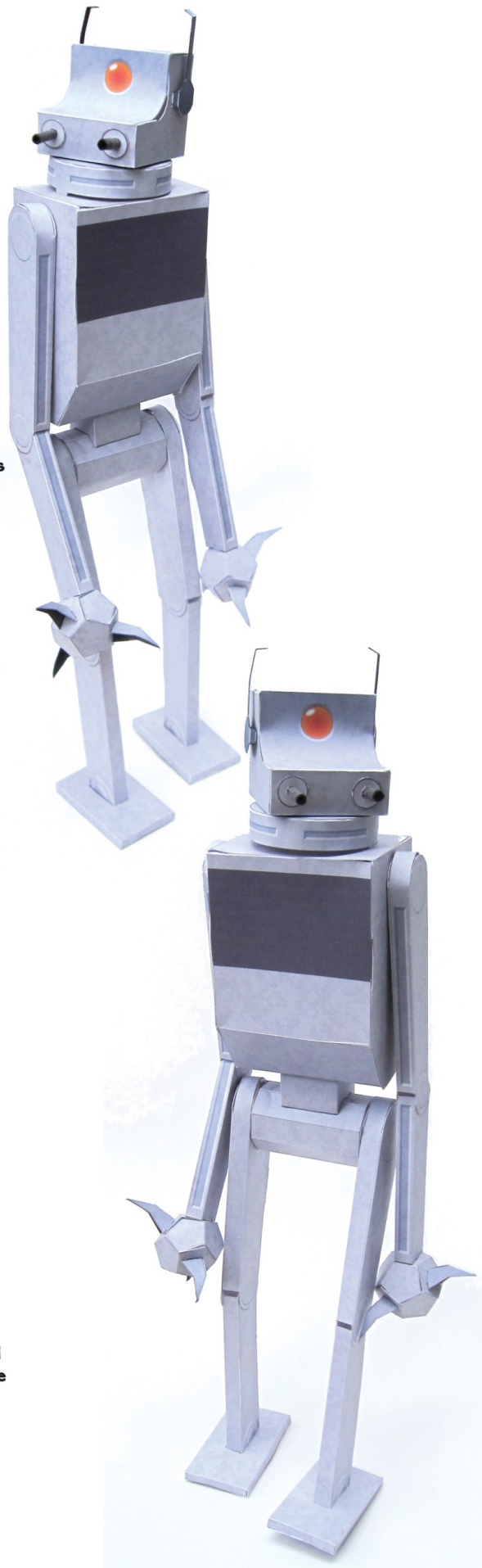
Some of the folding and gluing is pretty detailed and precise. The hands, hips and collar are difficult. Go slowly, be patient. You can always print out more parts if you make a mistake.

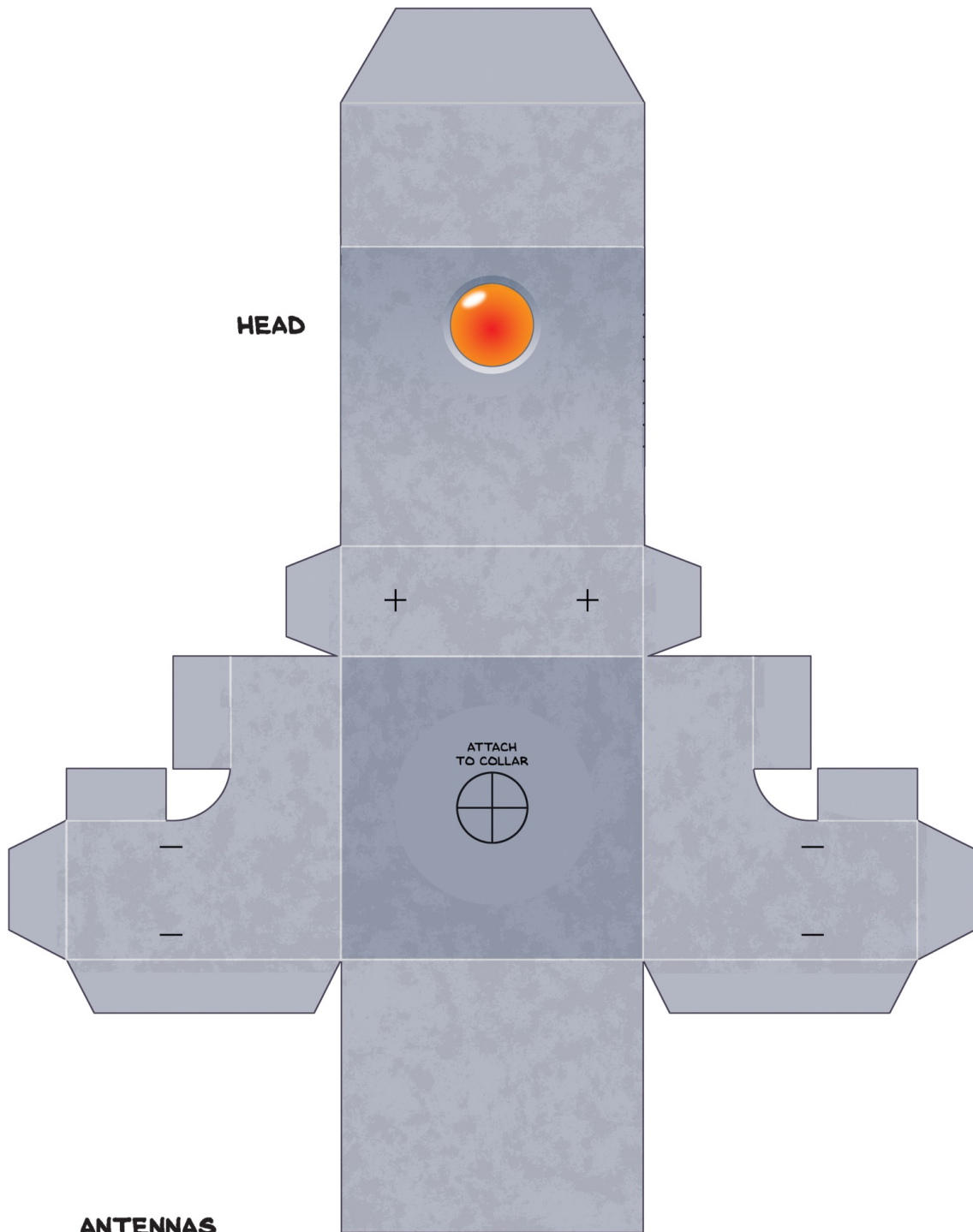
I did my best, but this is not a precision-engineered model. Modify as needed to make it work!

If anybody actually makes the model, I'd love to see the result. E-mail me photos at [brianfies@gmail.com](mailto:brianfies@gmail.com) and I'll post them on the webcomics site (unless you ask me not to.) Likewise, feel free to ask me any questions at that address, although you'll probably figure out everything with some fiddling.

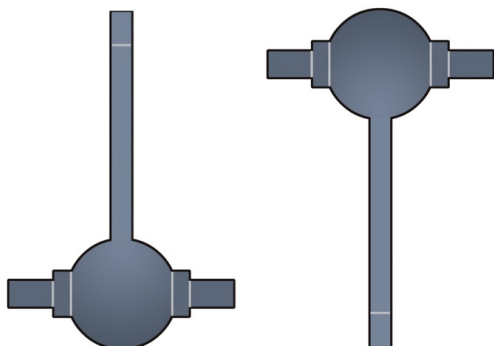
AND THANKS FOR READING

**THE LAST MECHANICAL MONSTER!**





### ANTENNAS

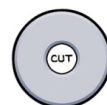
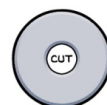


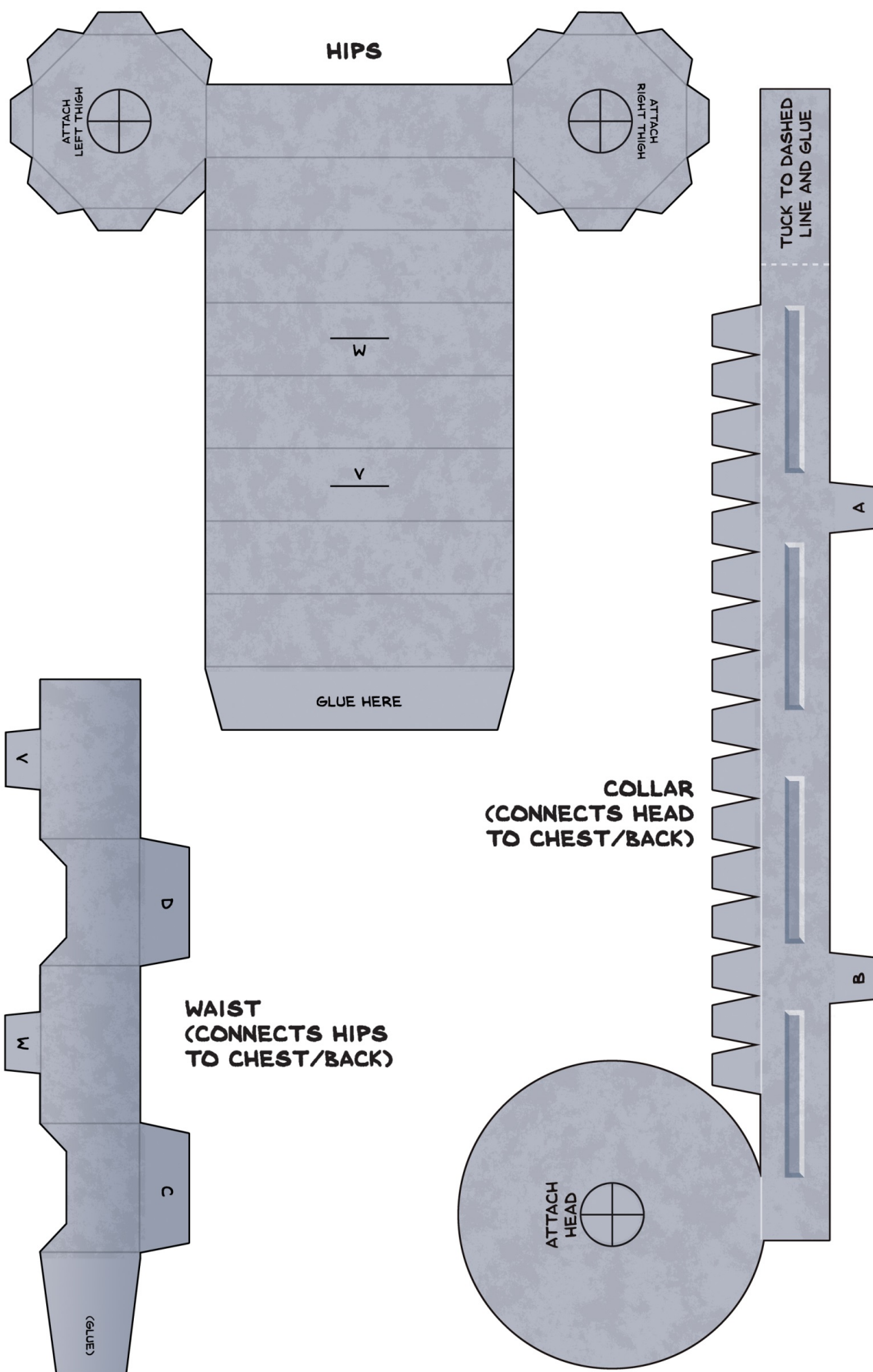
### FLAMETHROWERS



ROLL INTO TIGHT CYLINDER AND GLUE. INSERT THIS END INTO CROSS-CUT SLITS IN HEAD AS FAR AS GRAY LINE. GLUE. SLIDE DISK OVER TO COVER SLITS. GLUE.

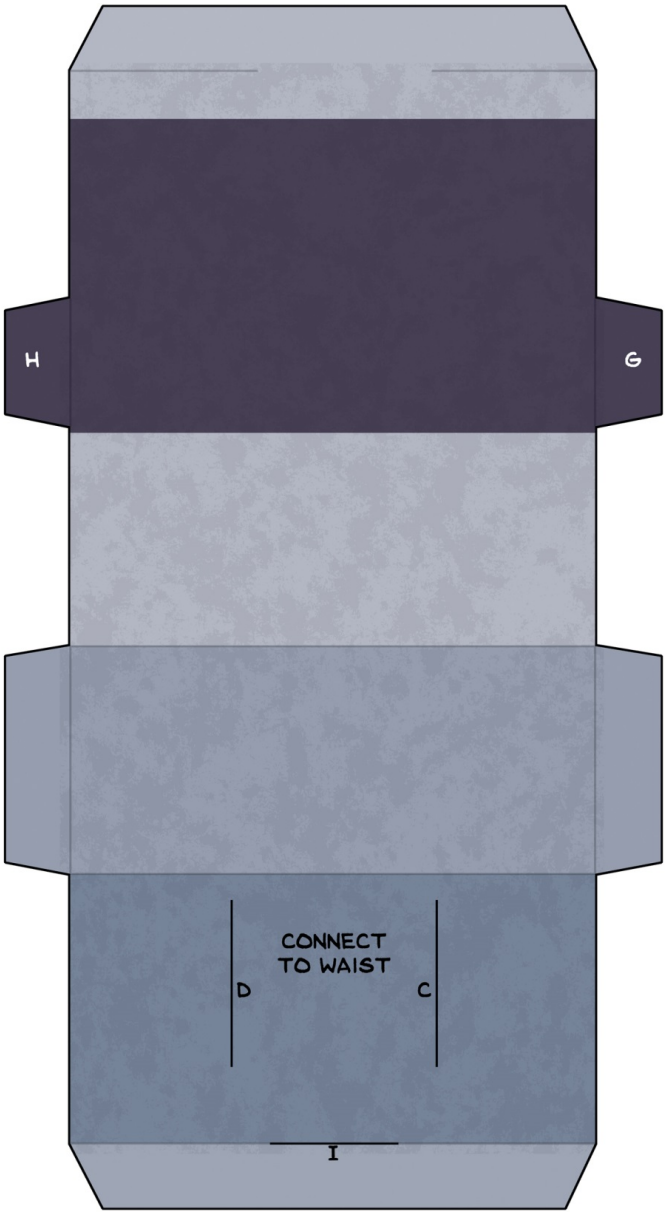
ROLL INTO TIGHT CYLINDER AND GLUE. INSERT THIS END INTO CROSS-CUT SLITS IN HEAD AS FAR AS GRAY LINE. GLUE. SLIDE DISK OVER TO COVER SLITS. GLUE.



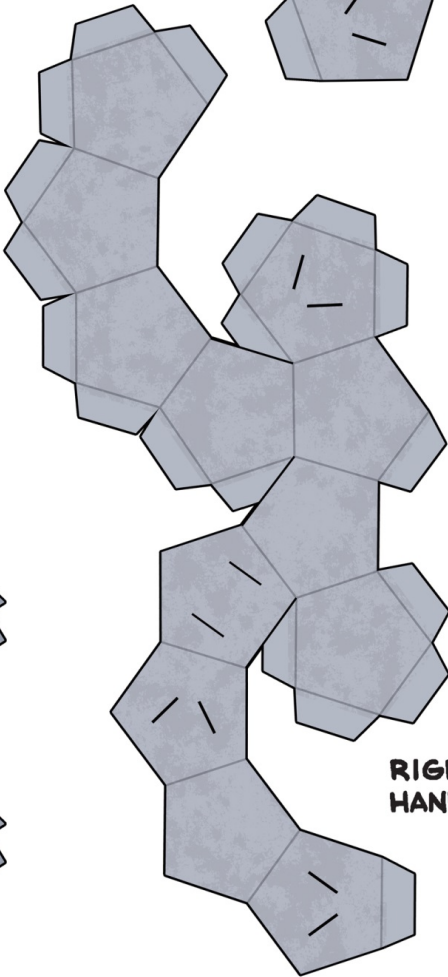
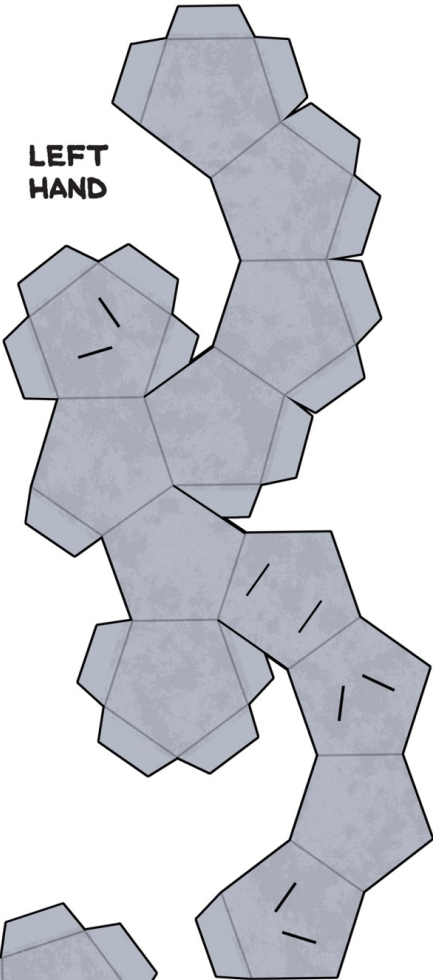




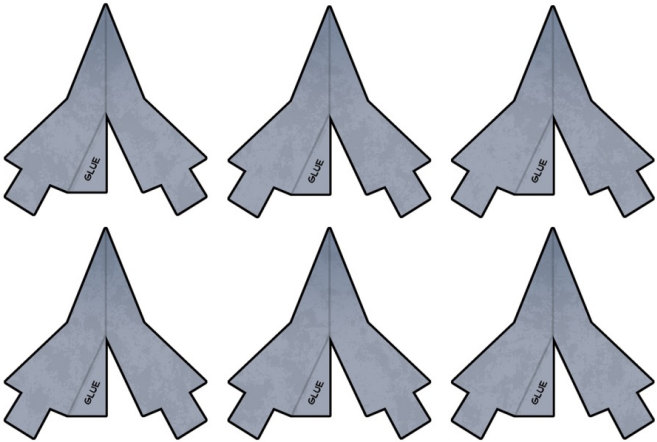
**CHEST (ATTACH TO BACK)**



**LEFT  
HAND**

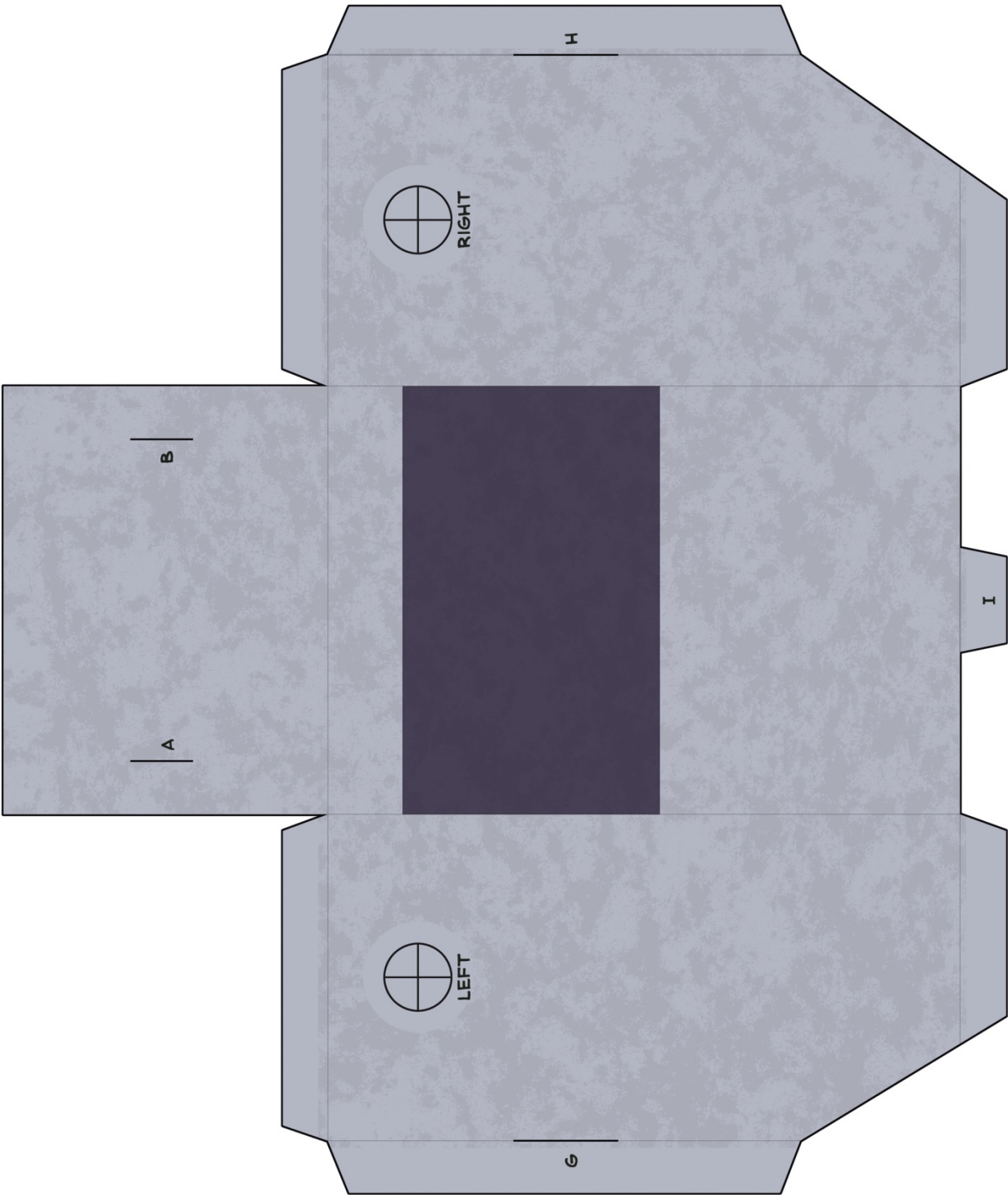


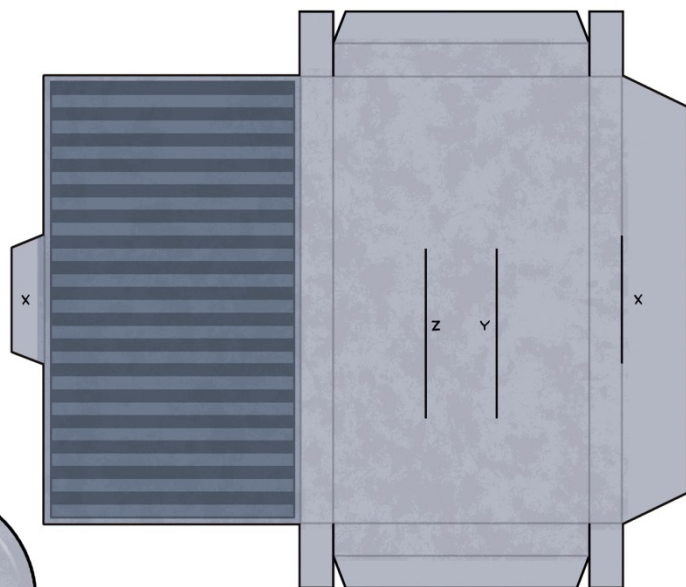
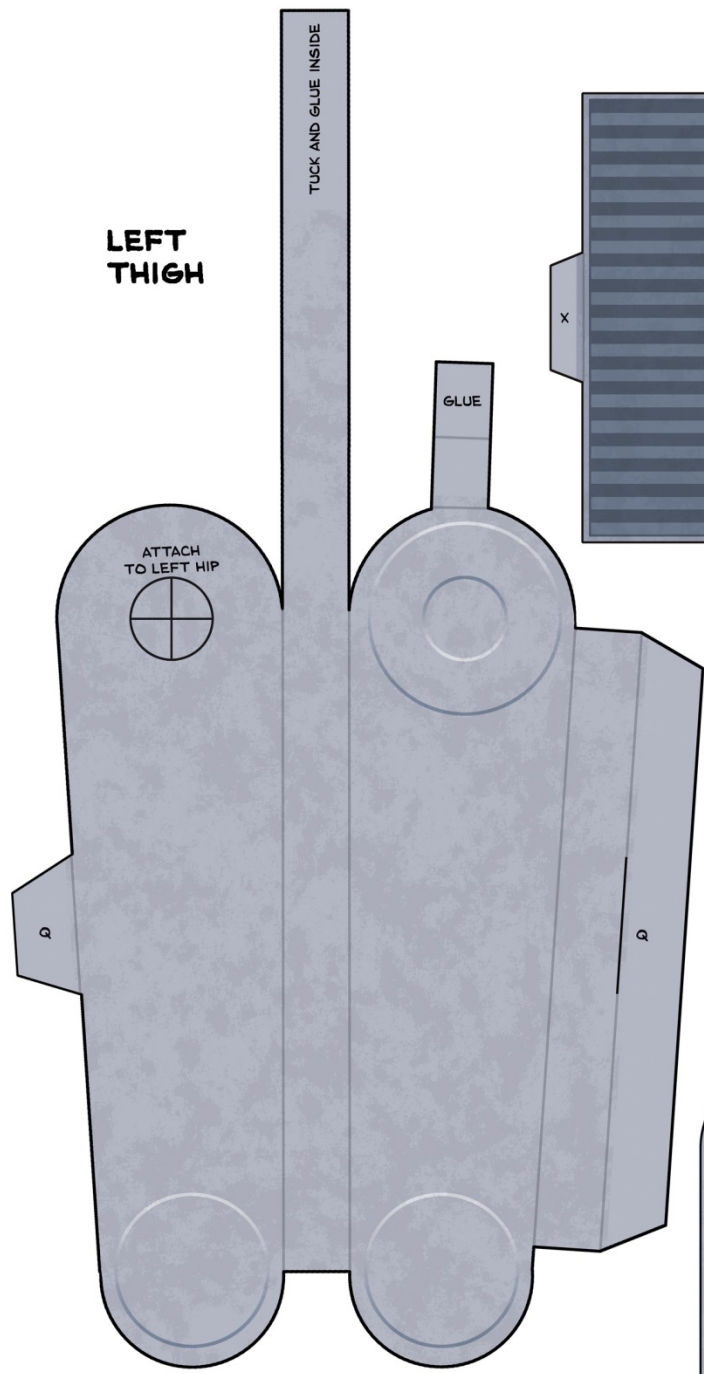
**RIGHT  
HAND**



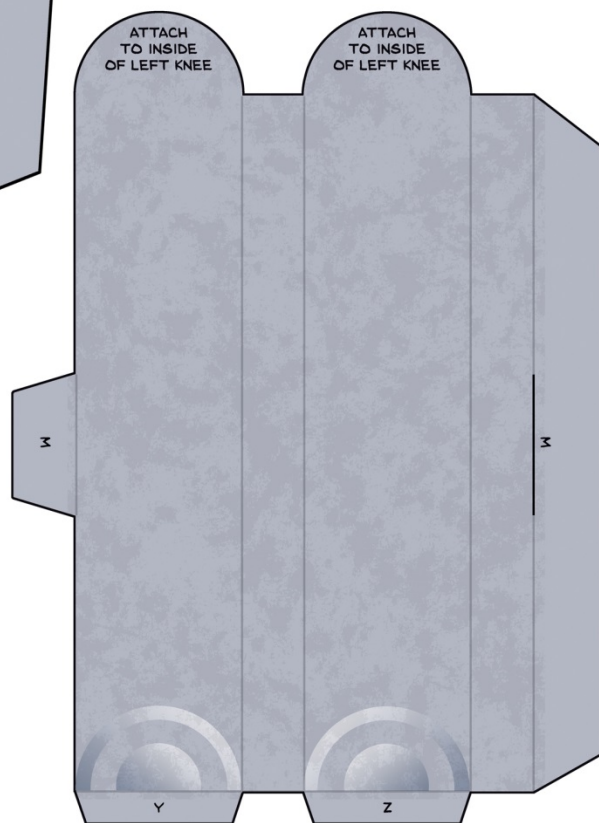
**CLAWS (THREE FOR EACH HAND)**

BACK (ATTACH TO CHEST)

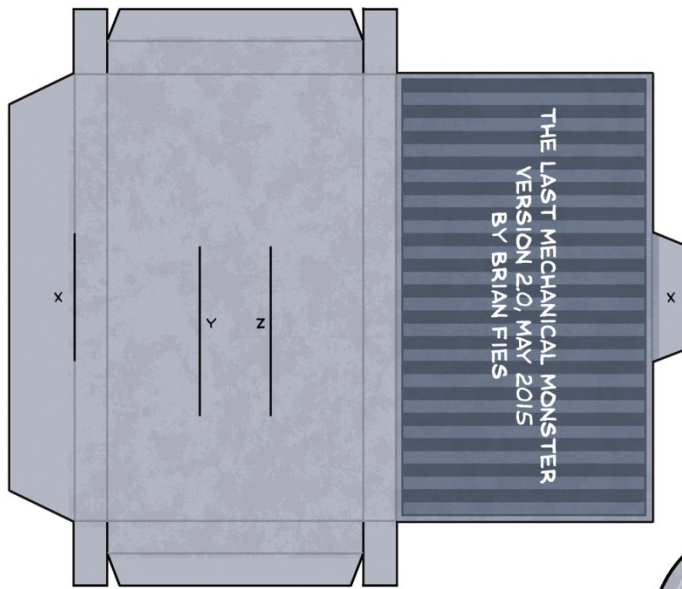




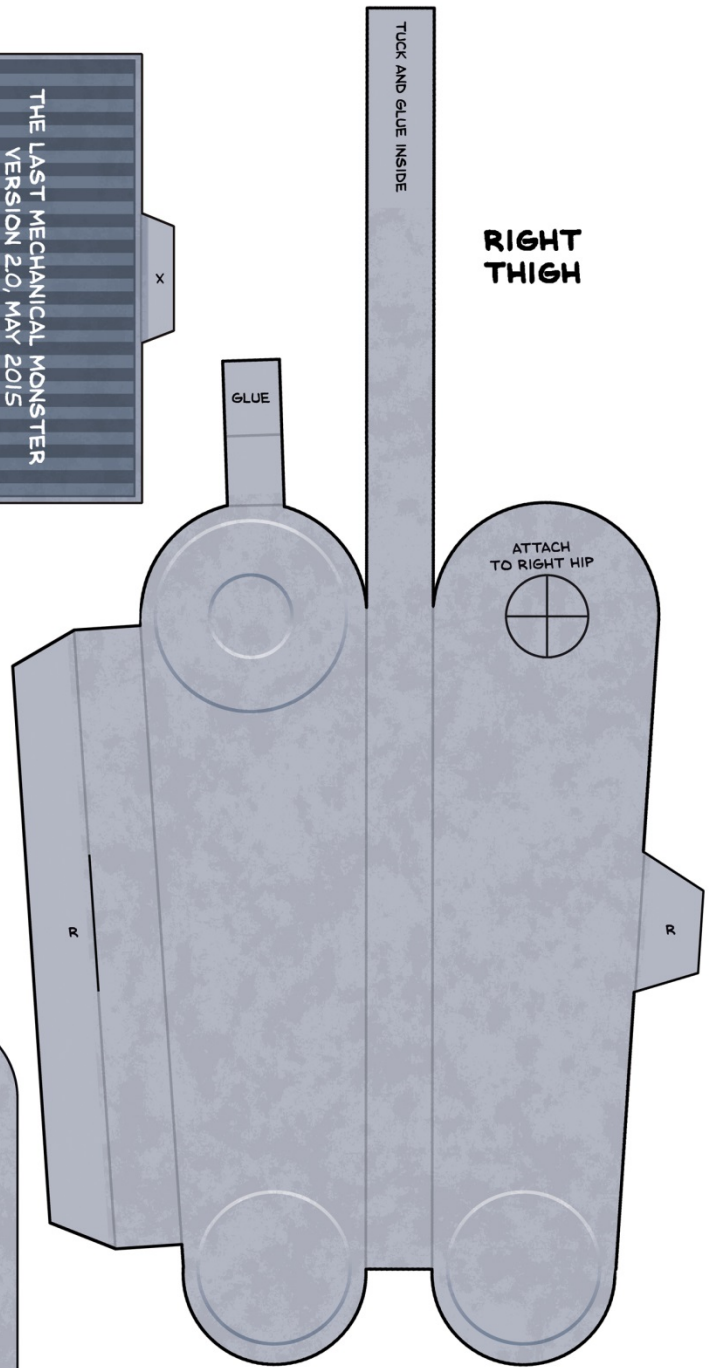
LEFT CALF



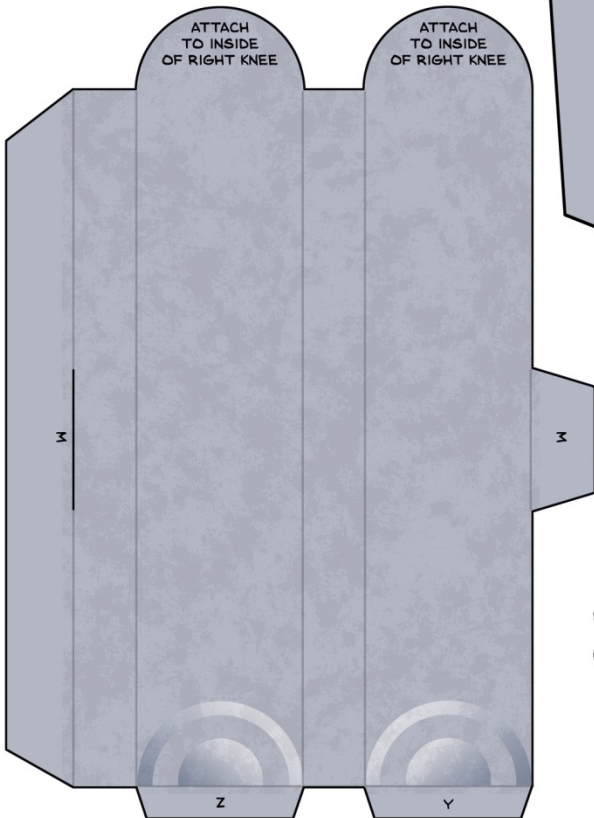




**RIGHT  
FOOT**



**RIGHT  
THIGH**



**RIGHT  
CALF**

